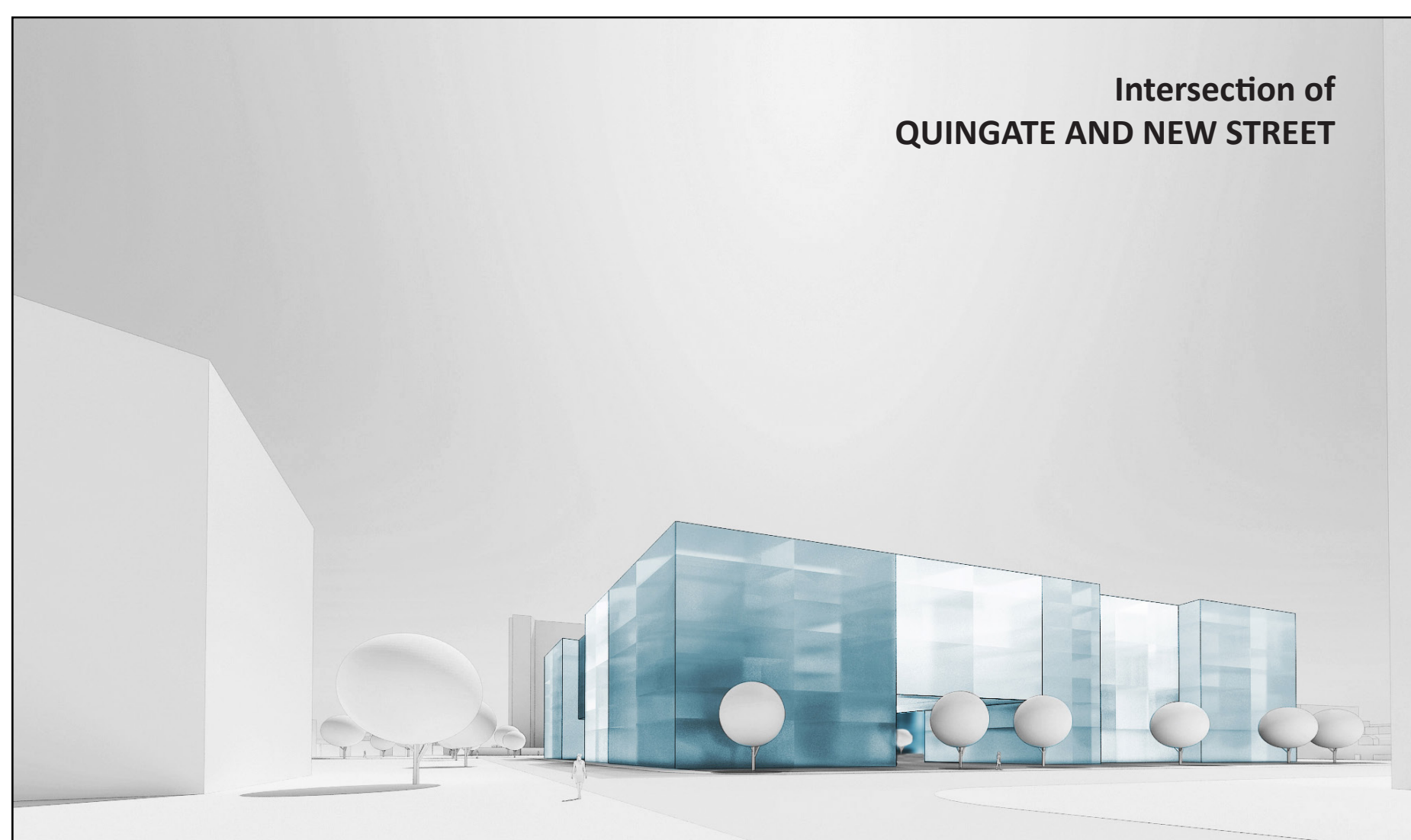
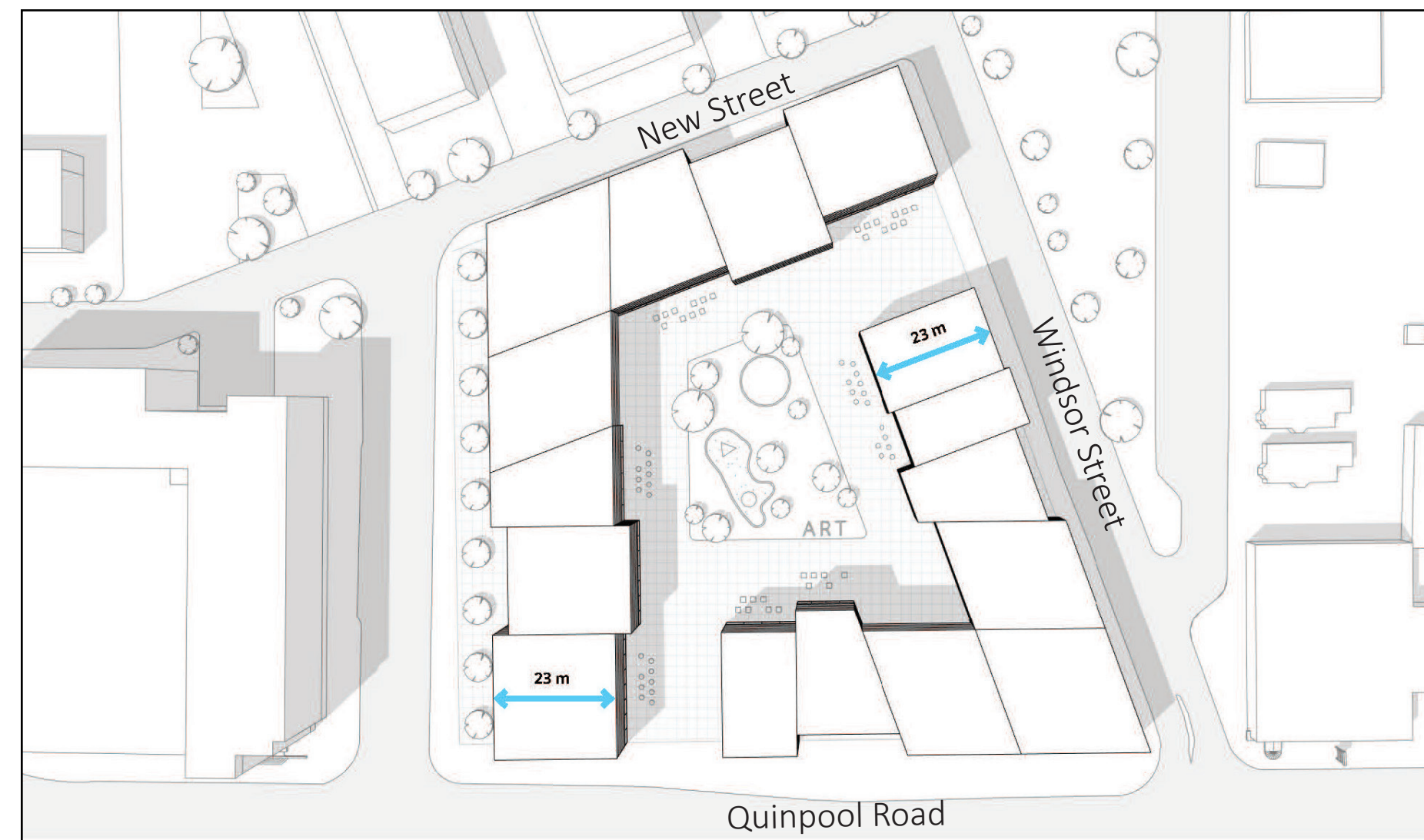
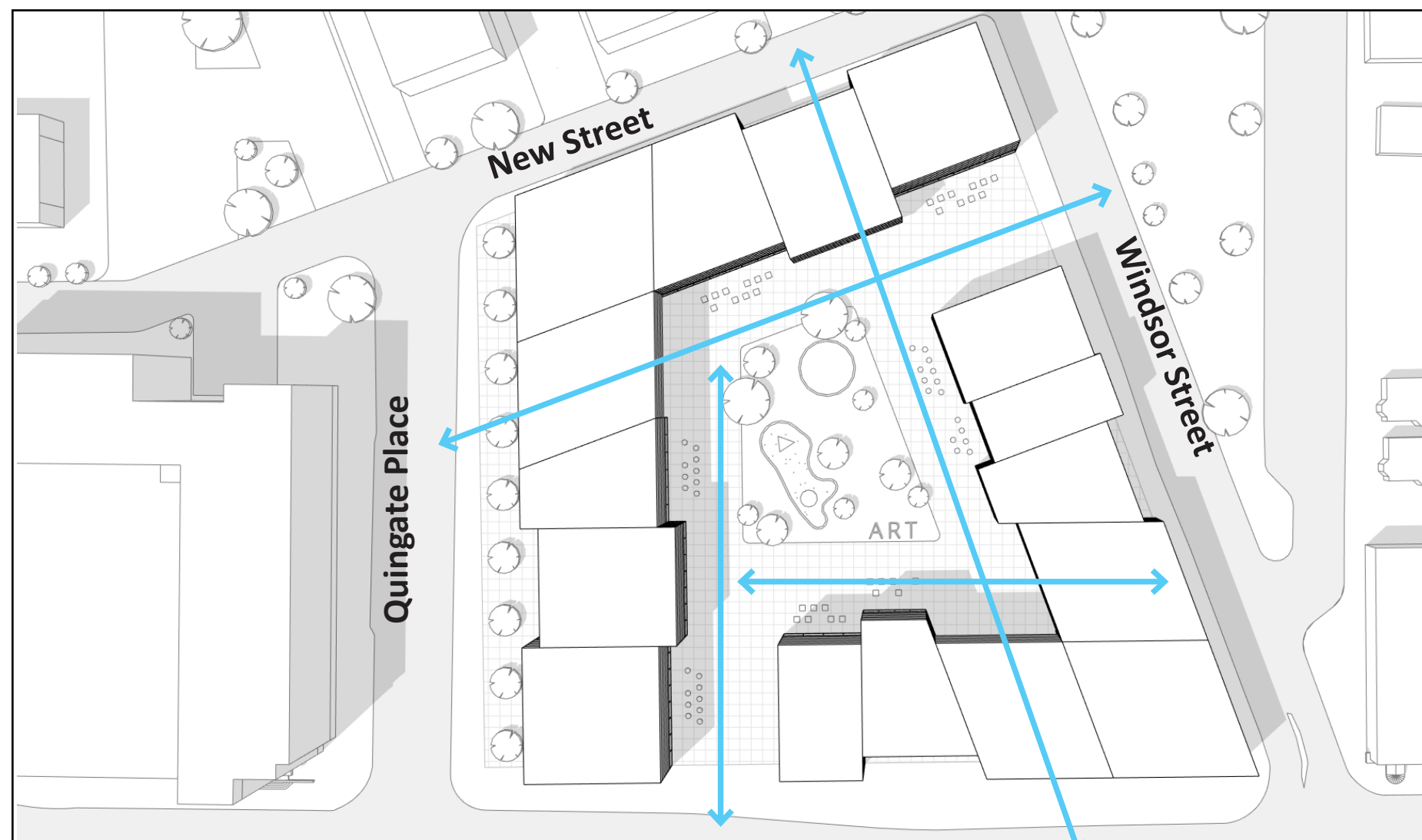
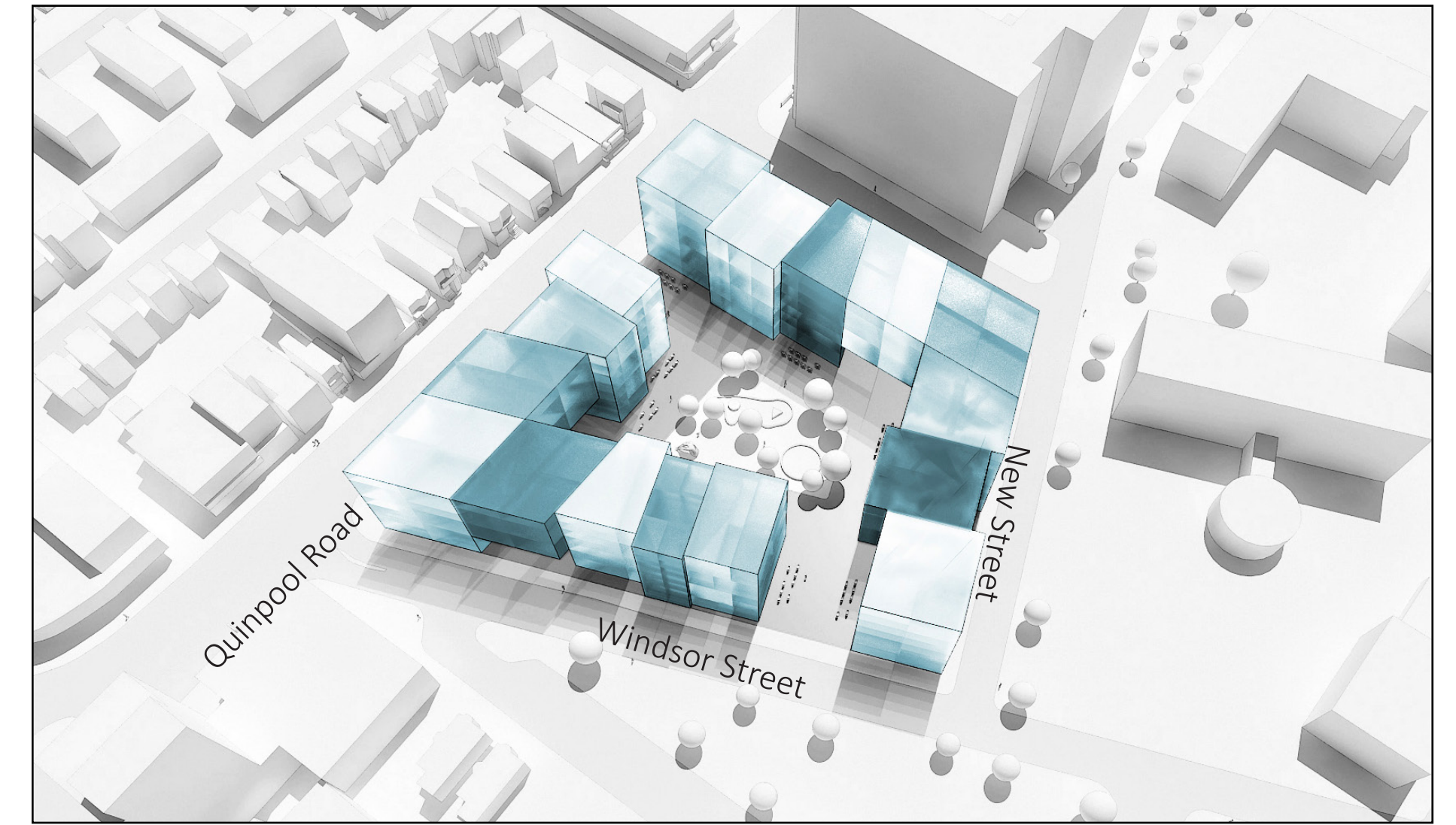
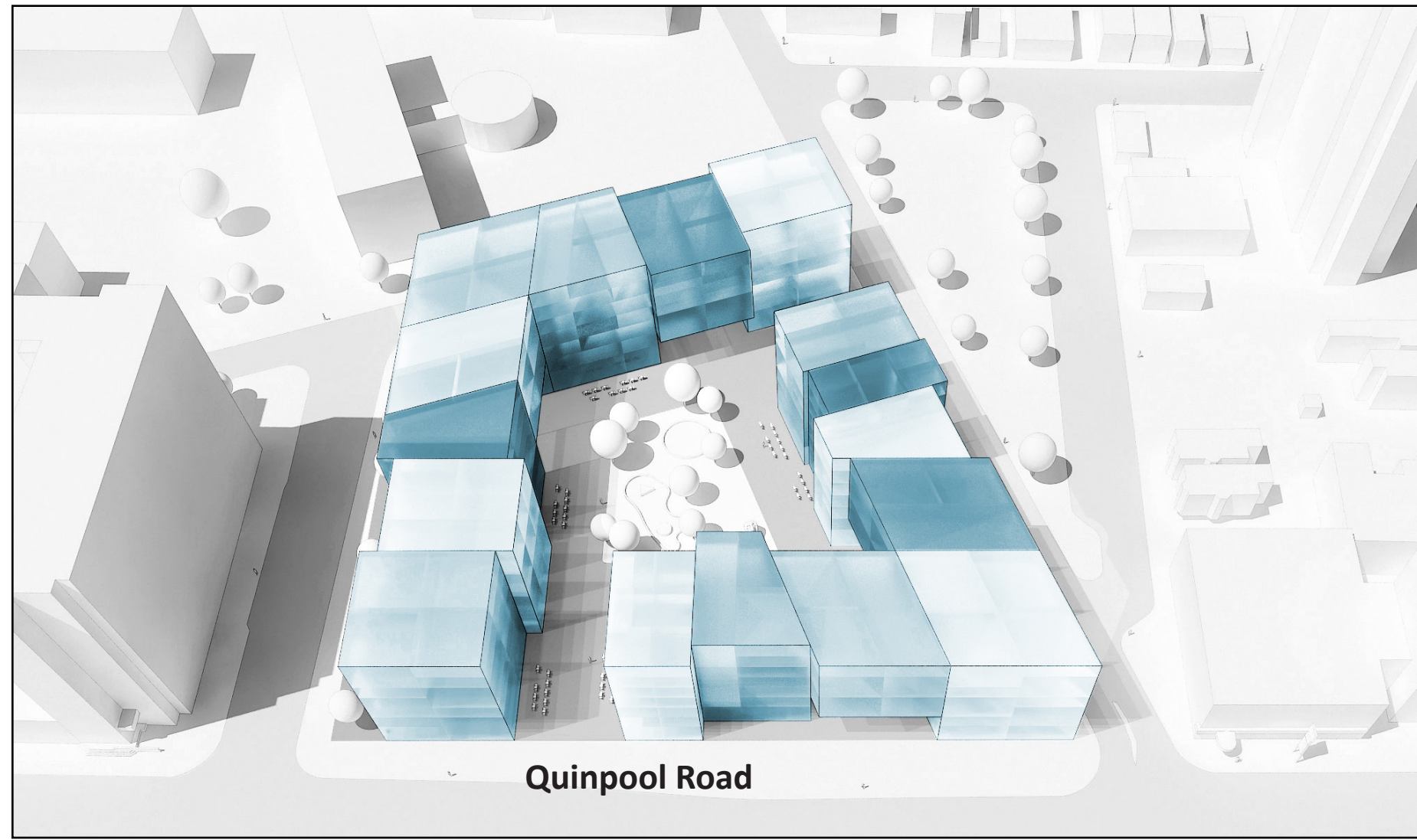
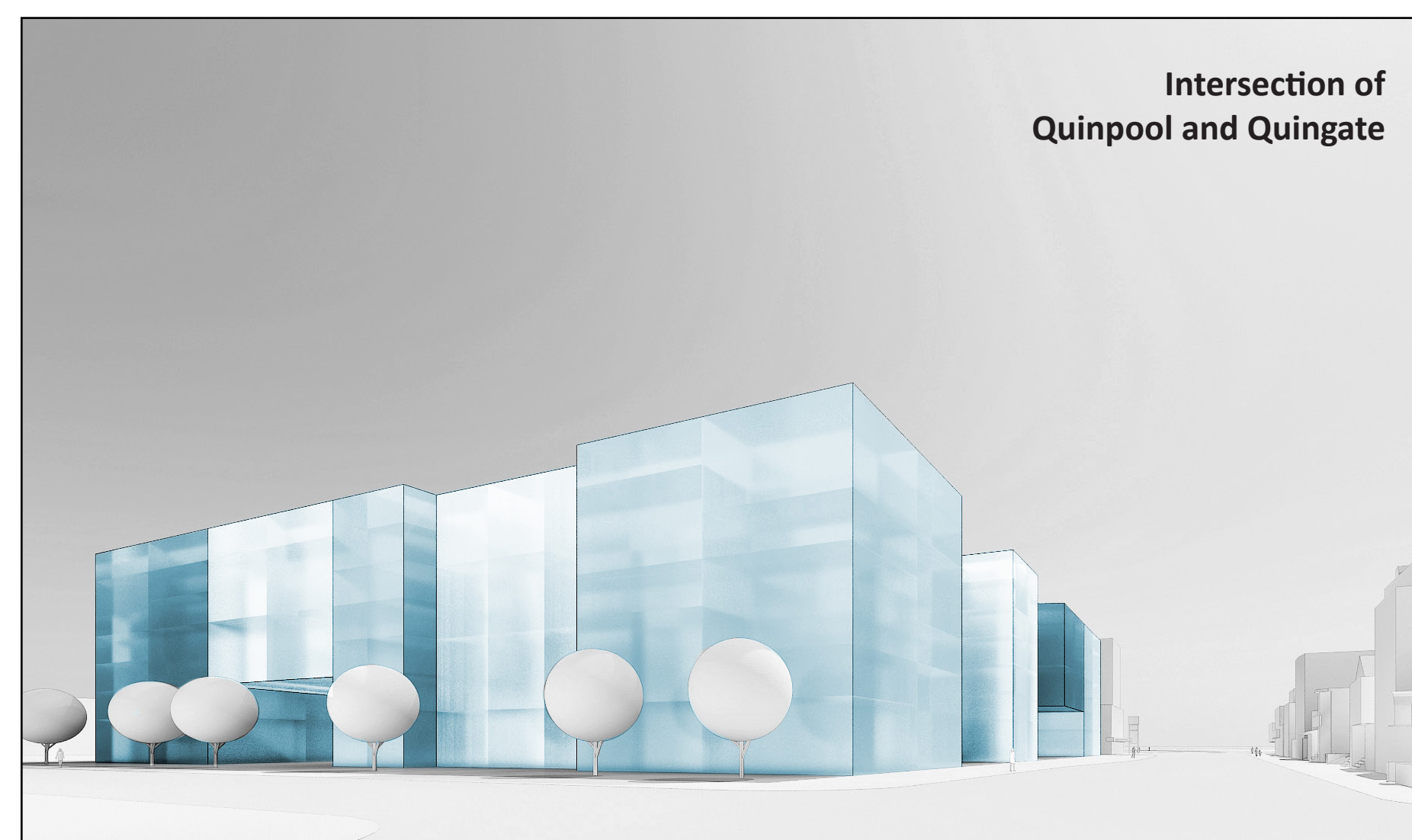


# THE SQUARE

The main intention of this design direction is to offer a project that has lower heights. The buildings form an almost continuous band around the site that is occasionally interrupted by pedestrian pathways that take the form of open gateways into the site. The buildings are generally 7 storeys and the continuous mass of the building is broken down by a variety of recesses that allow greater privacy for residents and terraces at the ground floor.



Intersection of  
QUINGATE AND NEW STREET



Intersection of  
Quinpool and Quingate

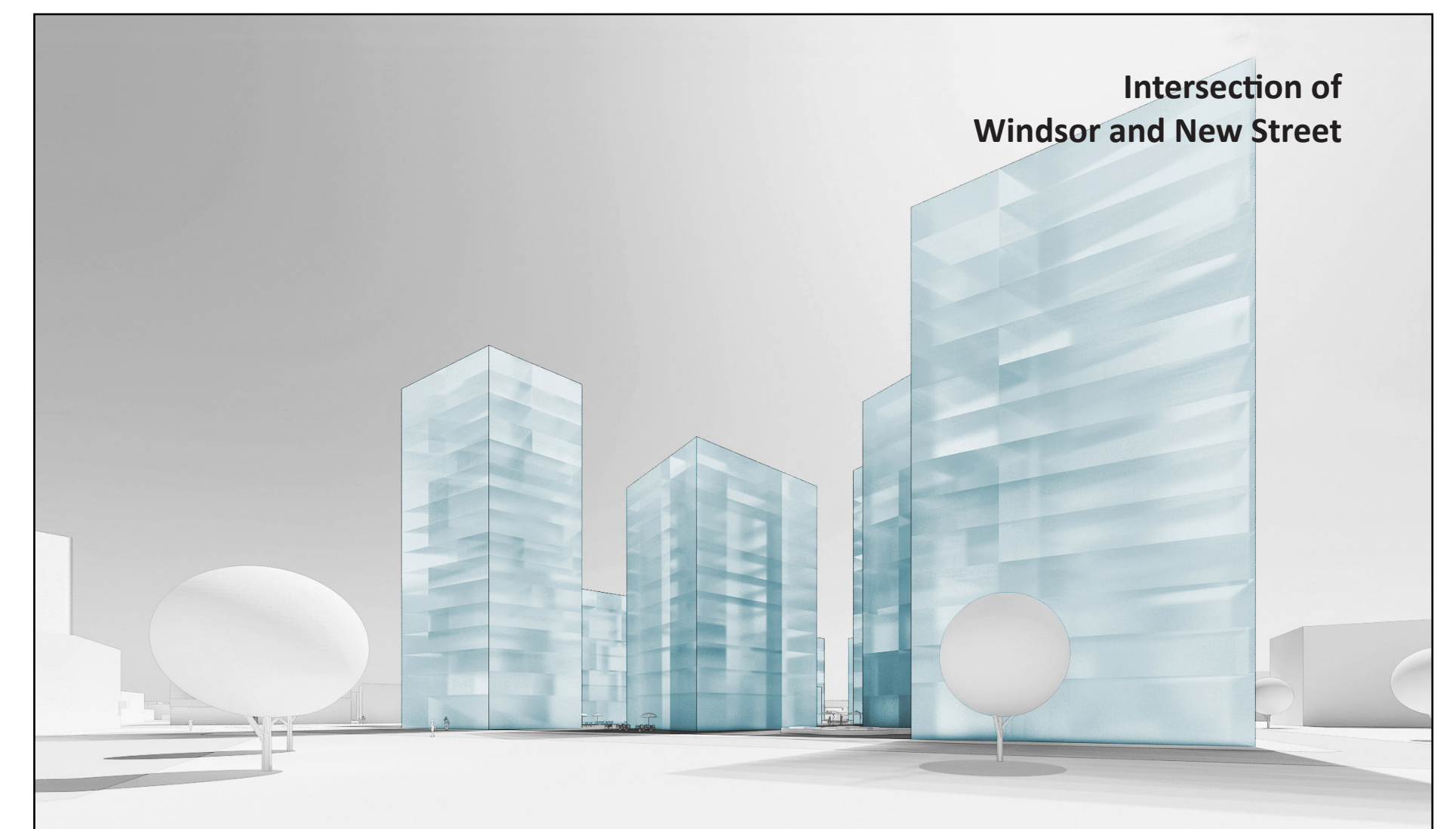
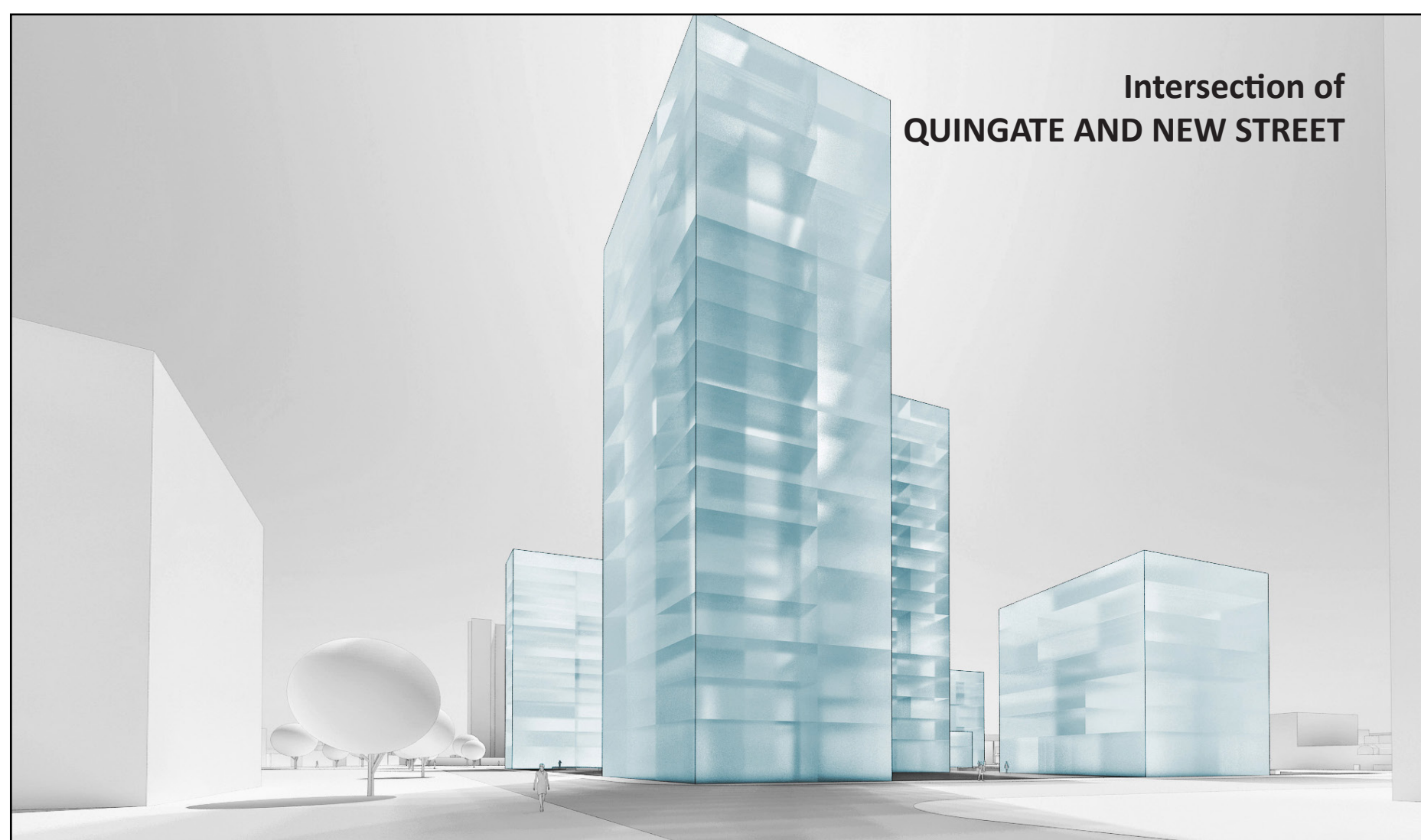
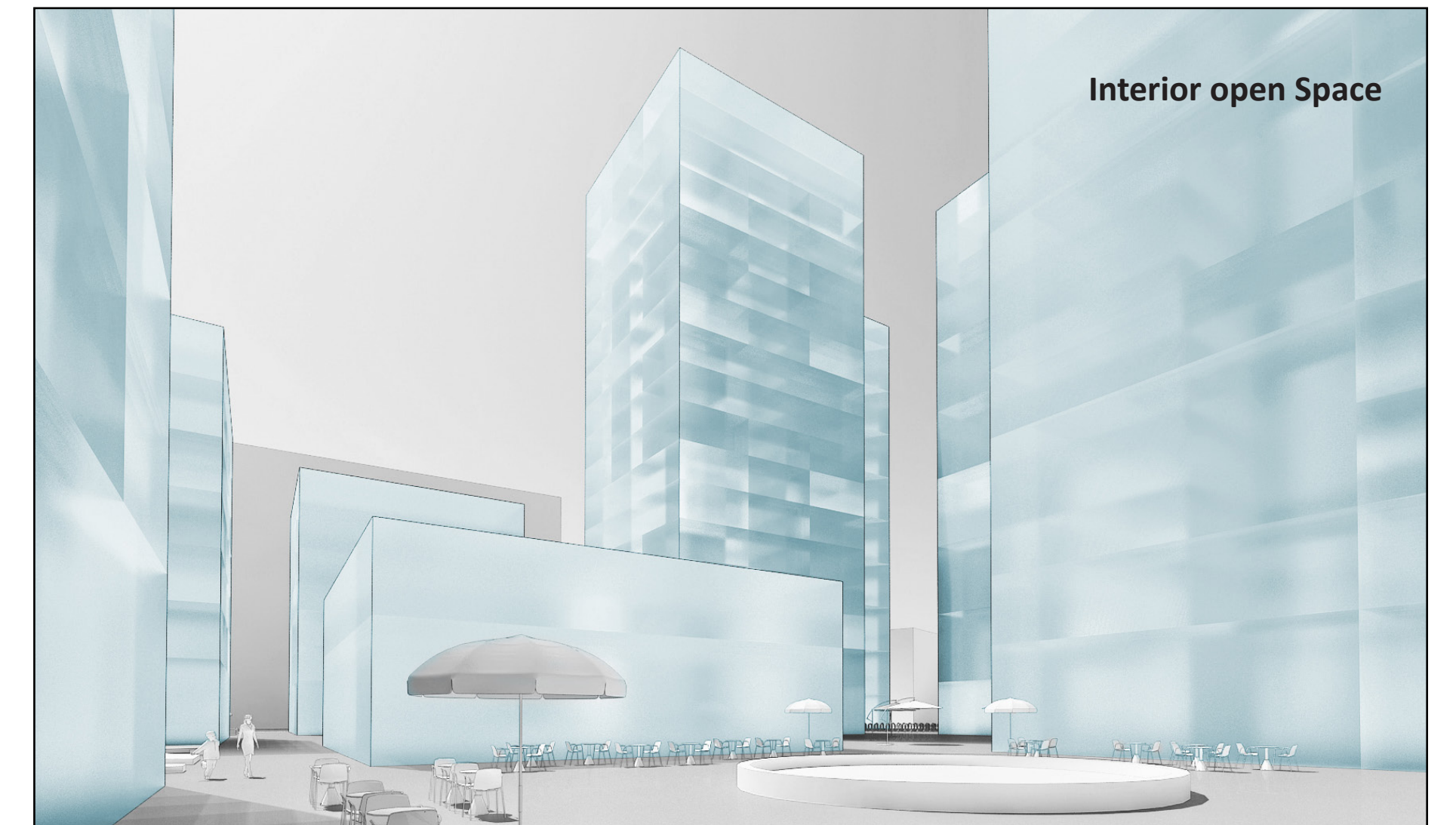
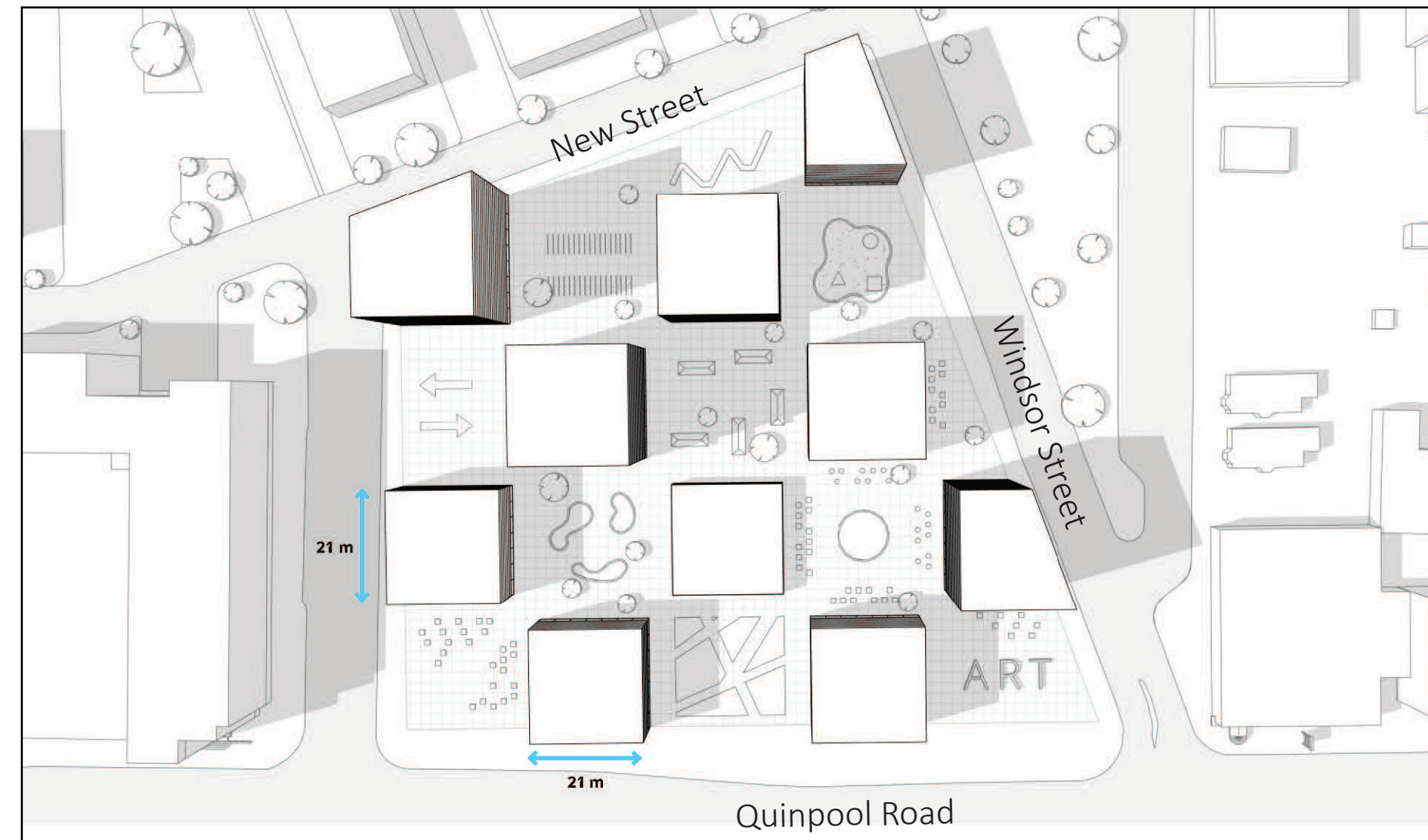
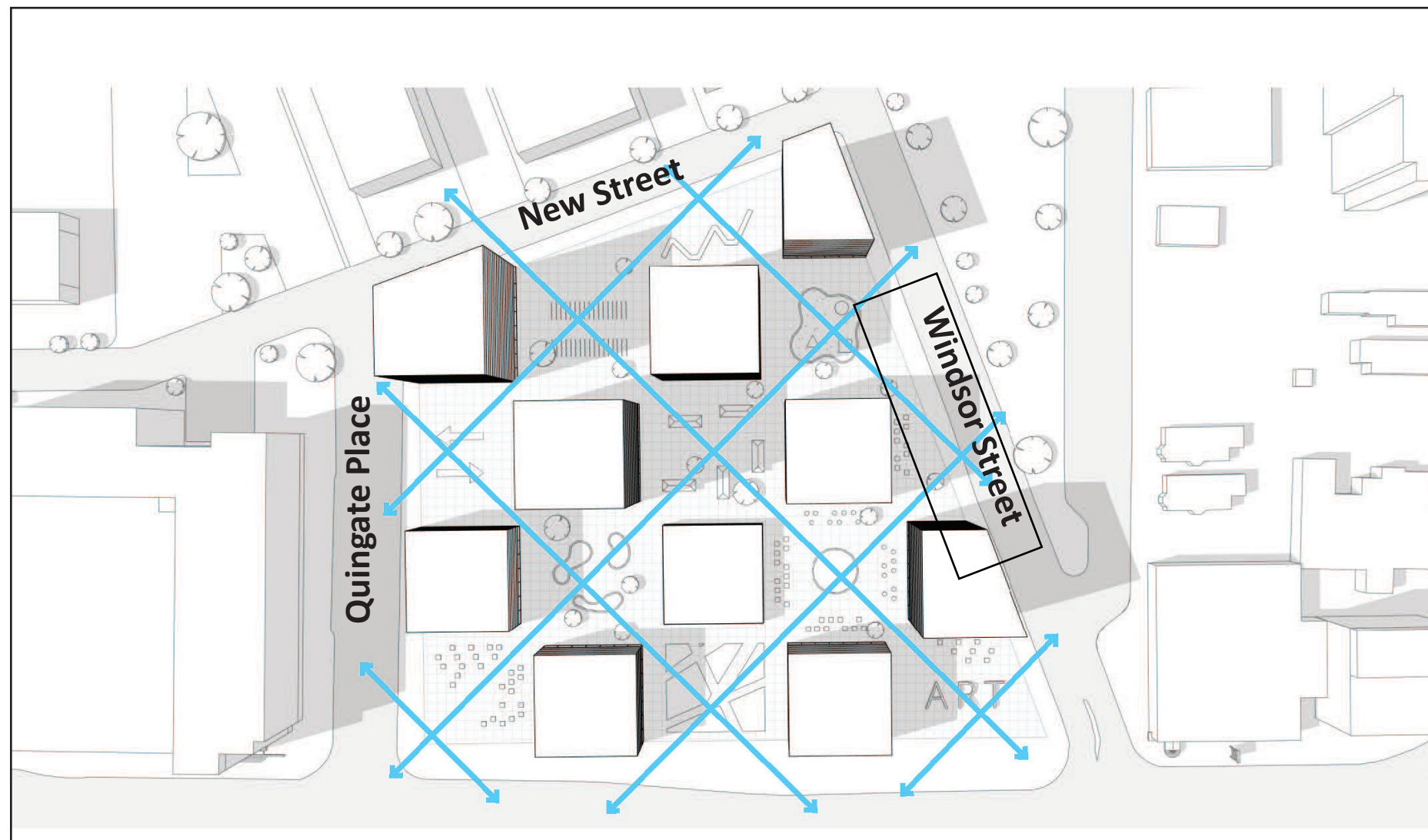
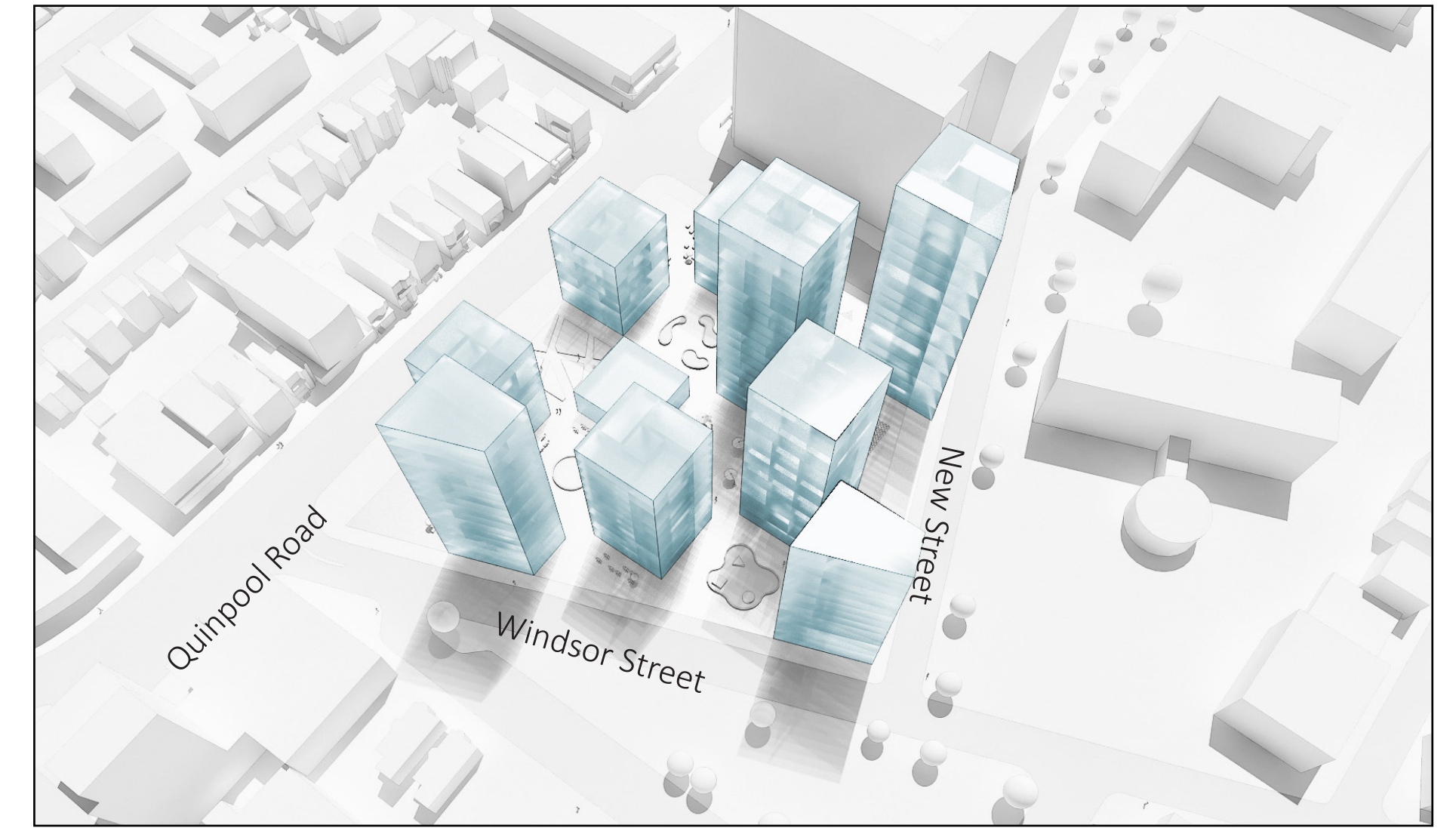


Intersection of  
Windsor and New Street



# THE GRID

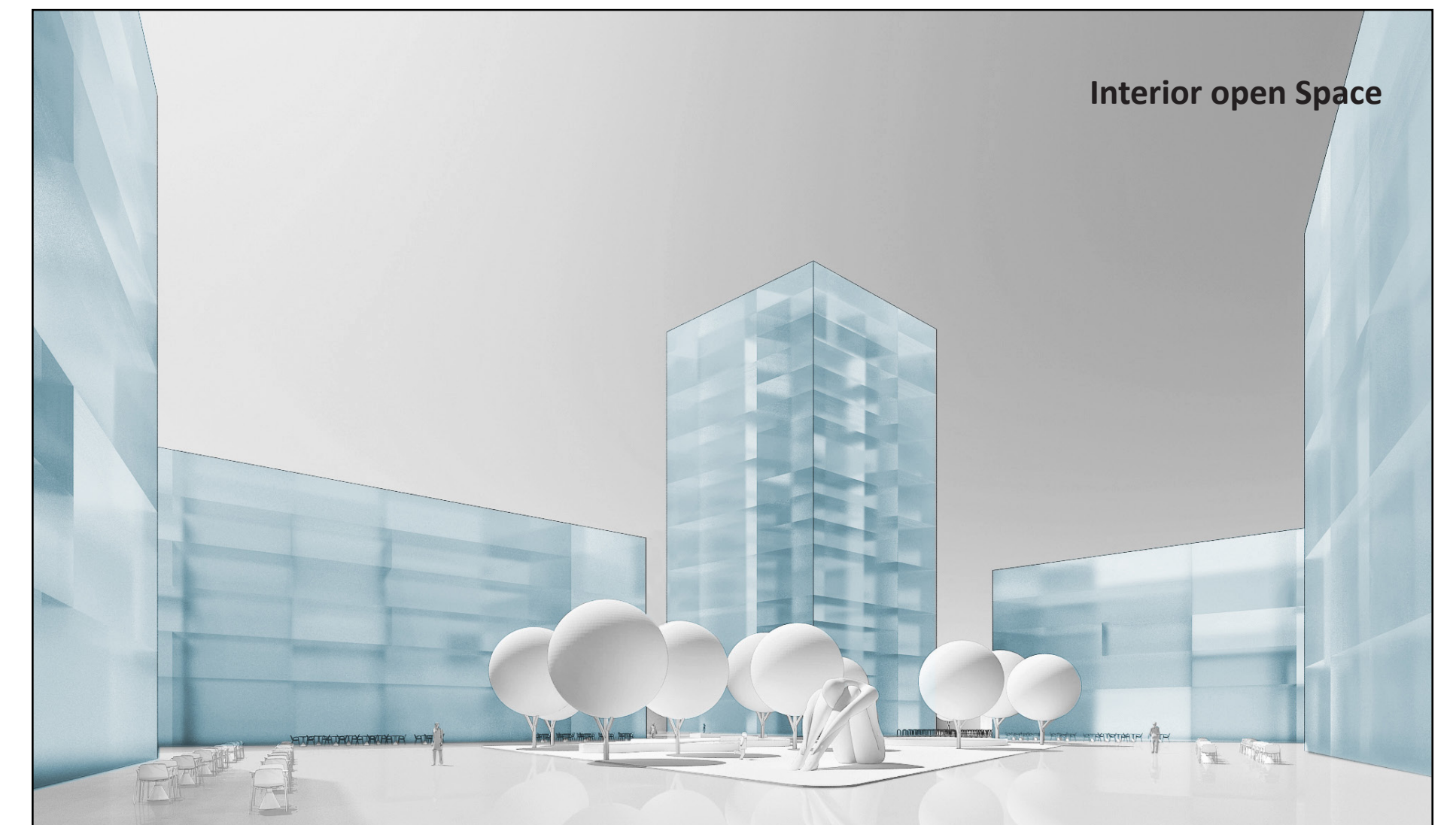
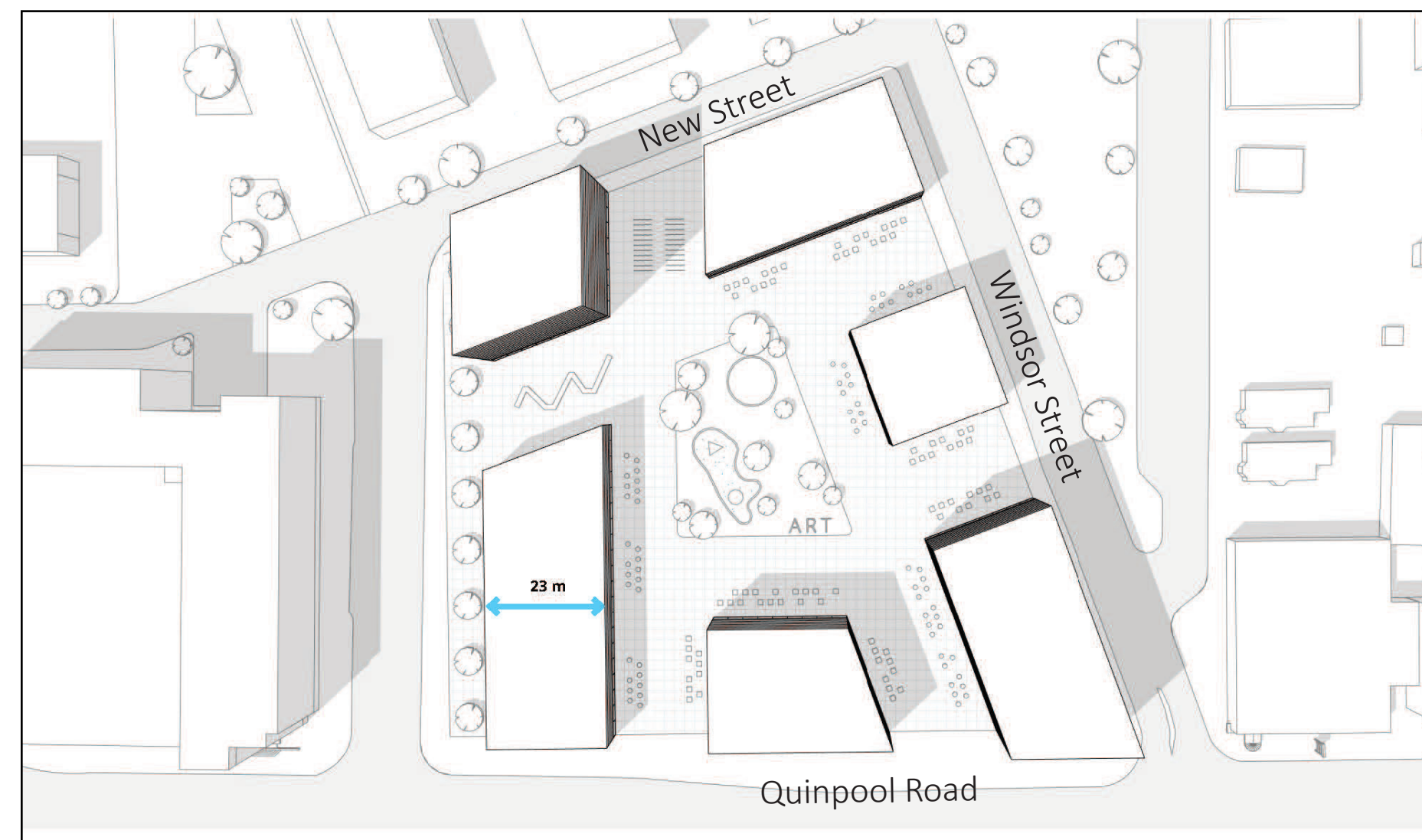
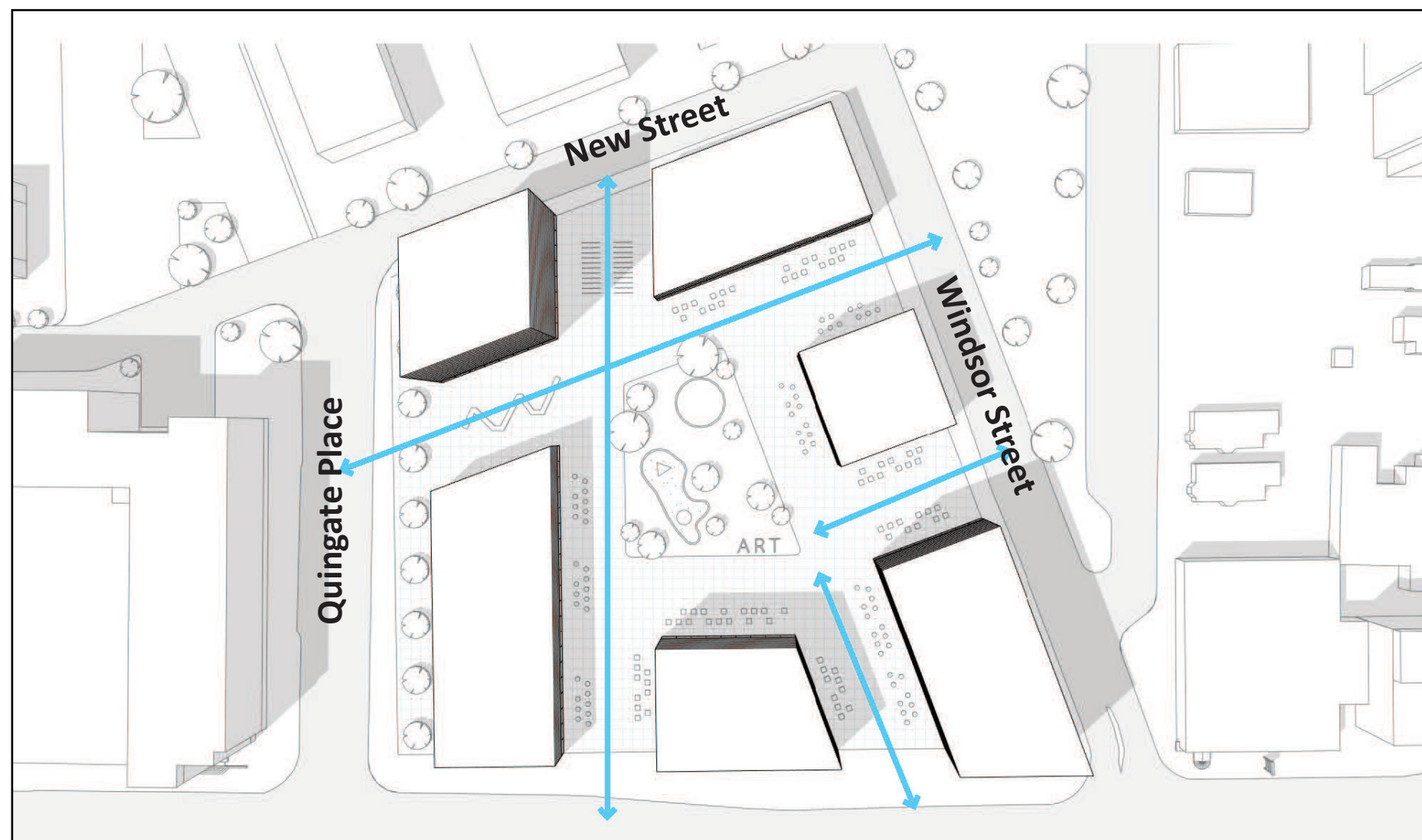
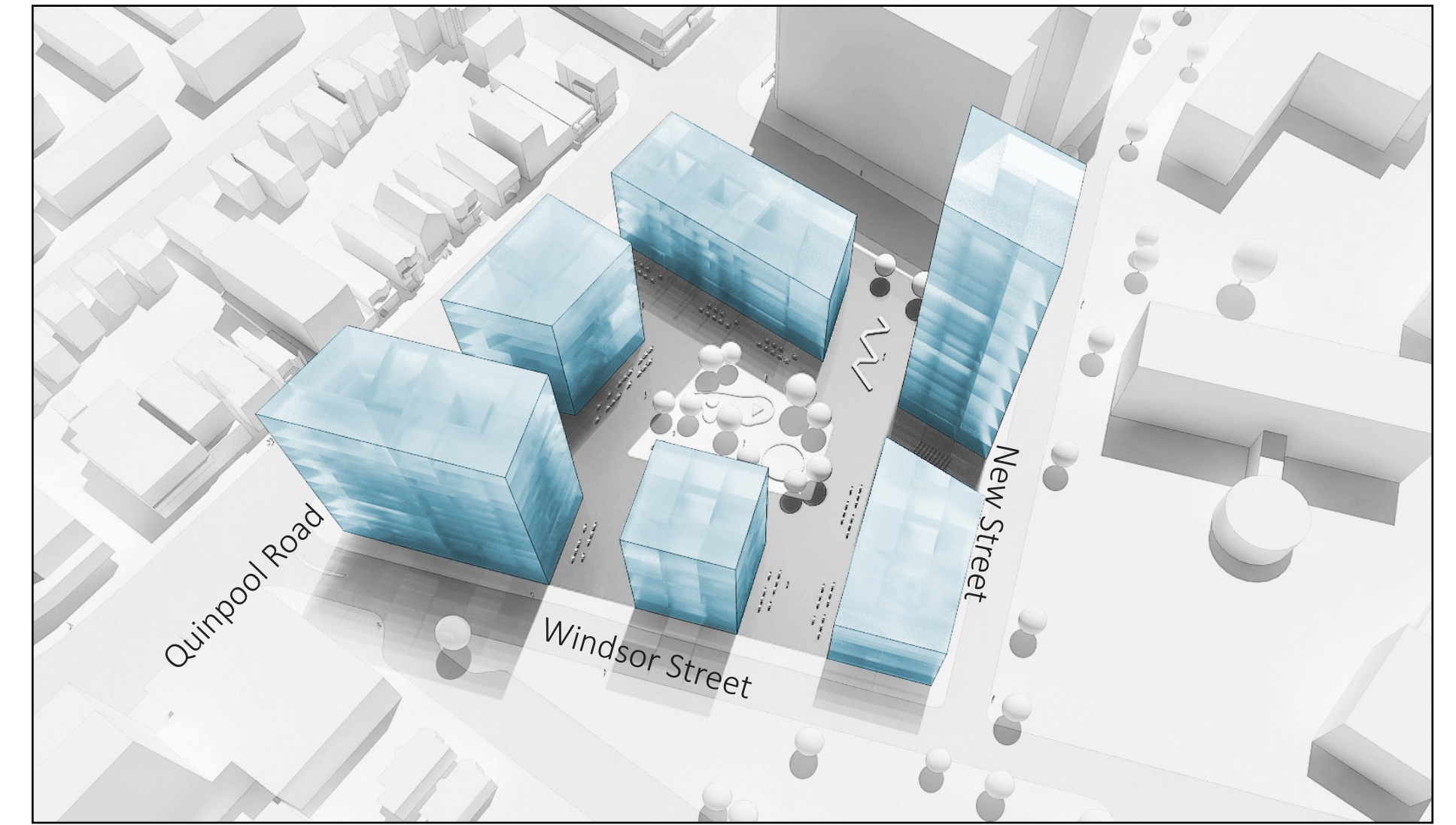
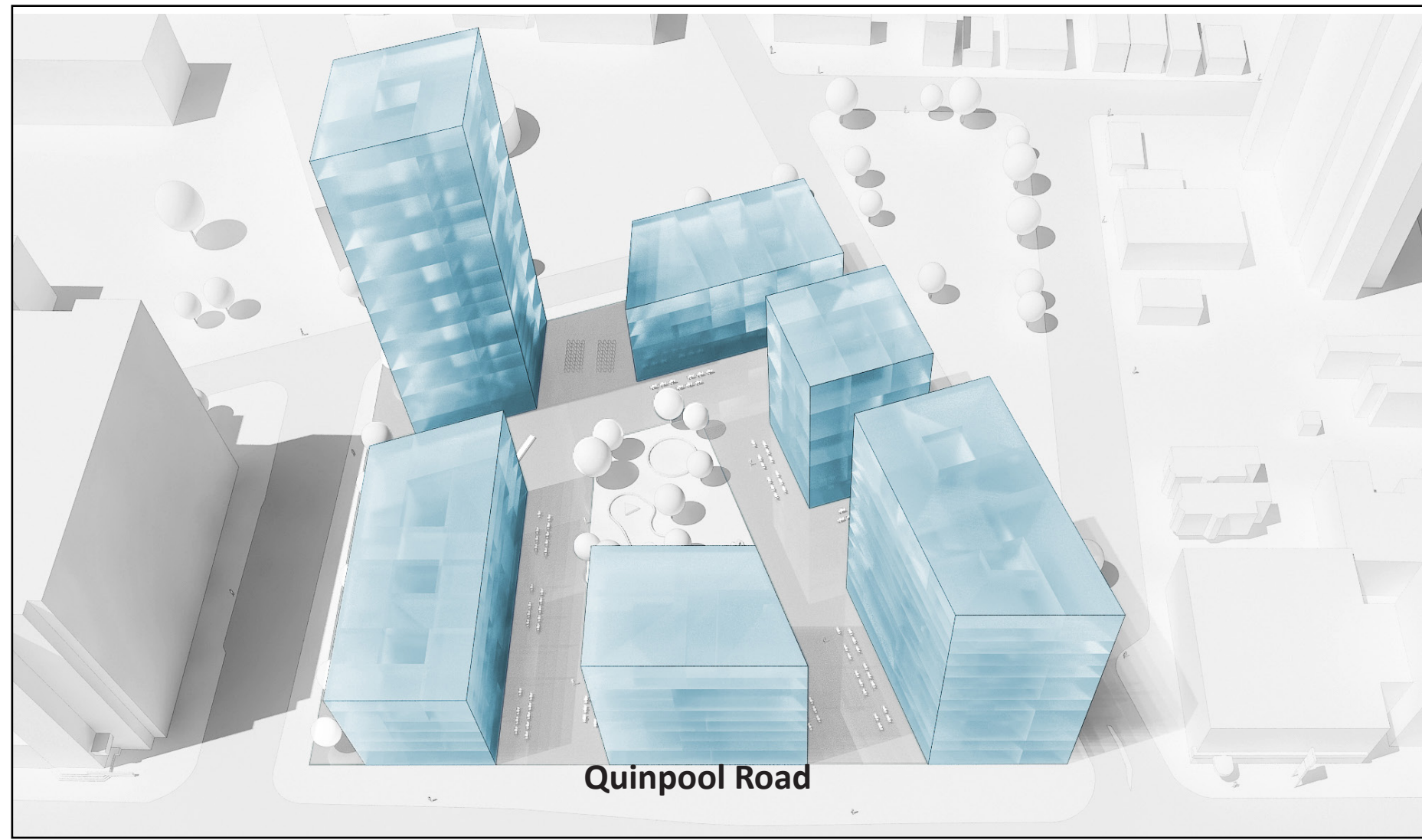
The main intention of this design direction is to recreate the liveliness of a village. While the small building footprints make it easy for pedestrians to wander through the site, the grid-like arrangement provides continuous views between buildings for both residents and pedestrians. This creates an opportunity to have a variety of open spaces surrounded by buildings of various heights ranging from 3 to 18 storeys.



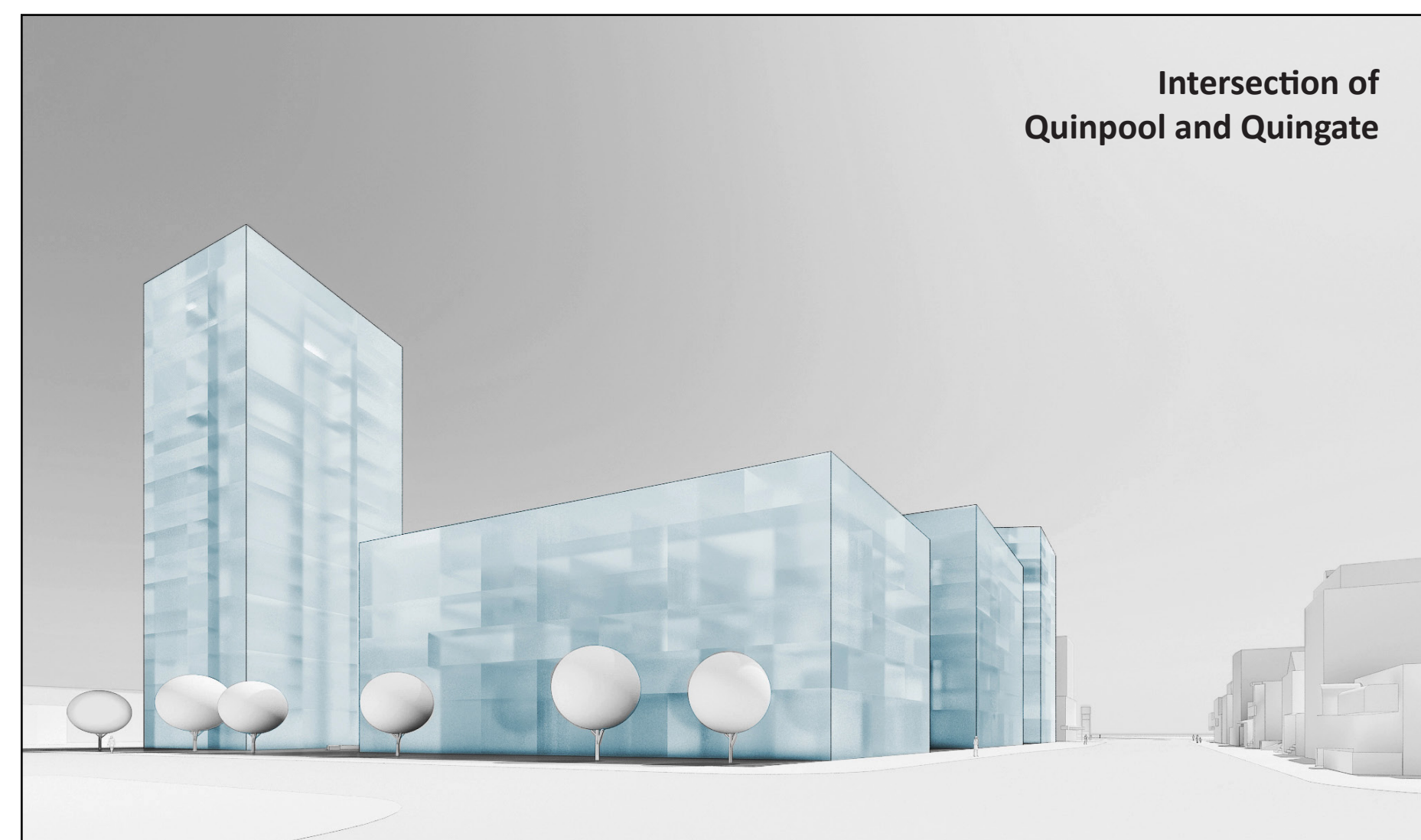


# THE PLAZA

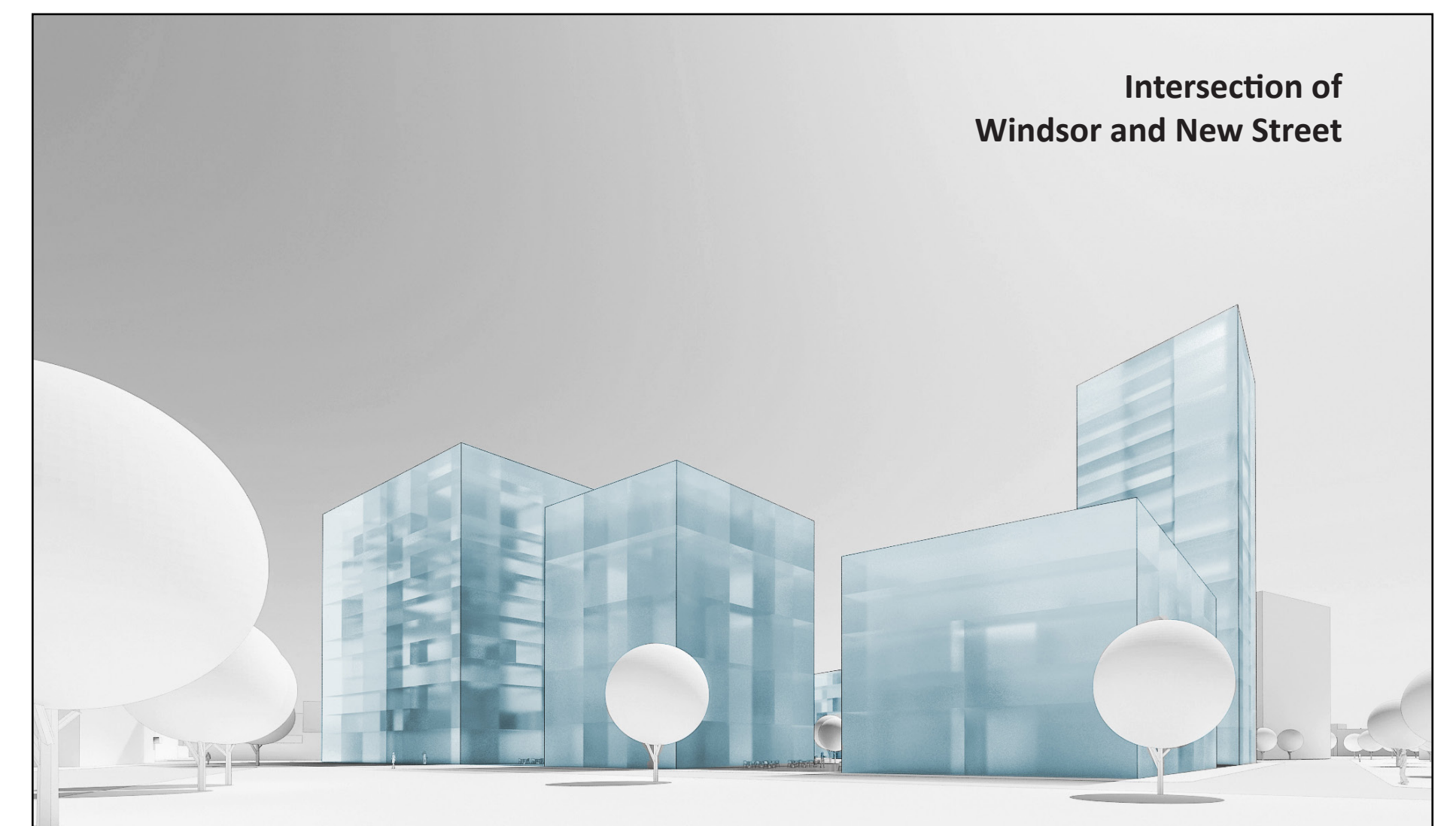
The main intention of this design direction is to provide the community with open spaces that demonstrate the civic character of pedestrian throughways. The project is divided into six buildings of varying height and proportion that are distributed around the periphery of the site. This allows for a large open space at the centre with a single building at approximately 18 storeys and the remaining buildings generally at 8 storeys.



Intersection of  
QUINGATE AND NEW STREET



Intersection of  
Quinpool and Quingate



Intersection of  
Windsor and New Street